

**MARK SCHEME for the May/June 2011 question paper  
for the guidance of teachers**

**0417 INFORMATION AND COMMUNICATION  
TECHNOLOGY**

**0417/22**

Paper 2 (Practical Test A), maximum raw mark 80

This mark scheme is published as an aid to teachers and candidates, to indicate the requirements of the examination. It shows the basis on which Examiners were instructed to award marks. It does not indicate the details of the discussions that took place at an Examiners' meeting before marking began, which would have considered the acceptability of alternative answers.

Mark schemes must be read in conjunction with the question papers and the report on the examination.

- Cambridge will not enter into discussions or correspondence in connection with these mark schemes.

Cambridge is publishing the mark schemes for the May/June 2011 question papers for most IGCSE, GCE Advanced Level and Advanced Subsidiary Level syllabuses and some Ordinary Level syllabuses.

<b>Header</b>	
Centre no left	Candidate name centre
and cand no right aligned	1 mark

<b>Scheme: Teachers' version</b>	<b>Syllabus</b>	<b>Paper</b>
<b>GCSE – May/June 2011</b>	<b>0417</b>	<b>22</b>

Centre number

Candidate number

# Export facilities at Port Pepard

## *New developments reported by: a candidate*

### **Location of Port Pepard**

The Northwest region of the country has a long coast line of over two thousand kilometres and existing ports in over forty locations. Many of these traditional ports are unsuited to the large container ships or bulk carriers. New sites have been found for developing several new ports to handle the massive ships required by today's trade. The most important is Pepard on the south eastern coast. It has been developed specifically to handle the export of container ships of cars. These have been built to meet national and world demands for small, economical and environmentally friendly, family transport.

Text moved 1 mark

One of the unique features of Port Pepard is the availability of large tracts of land. This is attractive to several customers who wish to set up tank farms or warehouse facilities on site. A car storage facility is built here while awaiting shipping. Cars will be brought in by rail and loaded into containers in a newly developed container terminal.

Text deleted 1 mark

### **Development**

Port Pepard, a success story, is emerging as an important gateway for containers, bulk and break-bulk cargo. The steaming time from the region's largest city, Port Pepard provides

<b>Footer</b>	
Date left	1 mark
filename right aligned	1 mark

access to the main trade lines in the north western region. Handling facilities are developed to manage the container terminal. The terminal has 31 berths in 31 countries on 5 continents. With a 54% stake, APM is the major player in Port Pepard.

Title entry accurate, formatted 36 point sans-serif, underscored and aligned centre 2 marks  
 Subtitle entry accurate, formatted 18 point sans-serif italic and centre aligned 2 marks

New subhead entered and formatted 1 mark  
 Subheads identified and formatted 12 pt italic, sans serif, centred 1 mark

### **The Waterfront**

Port Pepard offers a total quay length of 1075 metres and accepts vessels of up to 14 metres draft. There is an on-dock rail facility with dedicated sidings to handle containers, bulk and break-bulk cargo. It also offers extensive back-up infrastructure, including warehousing facilities, open stack yards, weigh bridges and dedicated rail sidings.

### **Excellent Connectivity**

Port Pepard is well connected by road and rail to the rest of the country. It is directly connected by the broad gauge rail network of the National Railways. Port Pepard has set up a joint venture with the National Railways – Pepard Rail Corporation Limited, making it possible to offer the most competitive rail freight and transit times in the western coast. New links have also been developed with new

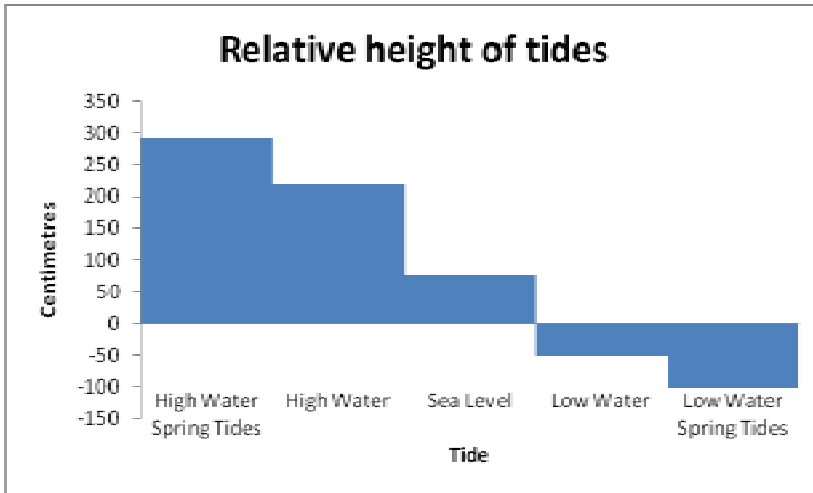
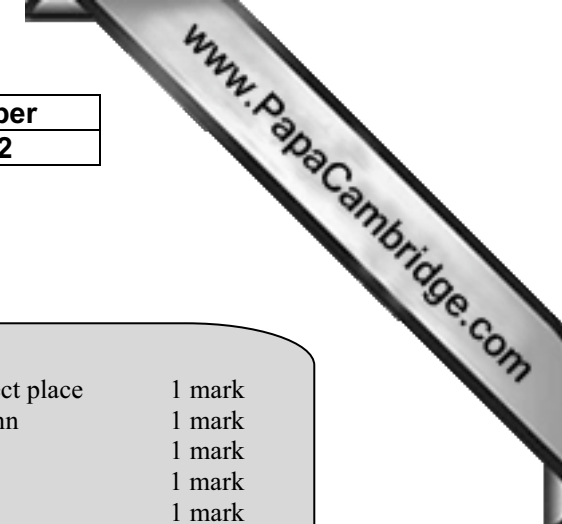


<b>Page 4</b>	<b>Mark Scheme: Teachers' version</b>	<b>Syllabus</b>	<b>Paper</b>
	<b>IGCSE – May/June 2011</b>	<b>0417</b>	<b>22</b>

Centre number

Candidate name

Candidate number



**Chart**

Created from correct data and in correct place	1 mark
Resized to fit within margins of column	1 mark
Title	1 mark
Series labels displayed in full	1 mark
Axis titles <b>Centimetres</b> and <b>Tide</b>	1 mark
No legend	1 mark

These favourable conditions at Port Peparad ensure easy and safe navigation of ships all year round. Thanks to the twin islands, Port Peparad can offer its services throughout the year, even during the monsoons, which provides an added advantage to its customers.

Centre number

Candidate name

Candidate number

# Latest UK Delivery Manifest

Model	VIN	Fuel	Engine Size	Cost Price	Colour	Port	Distributor	Delivered
Micro	376B15423019	1	600	€850.00	White	Harwich	UKMI PLC	€935.00
Micro	376C15423008	1	600	€850.00	White	Harwich	UKMI PLC	€935.00
Micro	376C15423005	1	600	€850.00	Green	Harwich	UKMI PLC	€935.00
<b>Micro</b>	<b>377C15423018</b>	<b>1</b>	<b>600</b>	<b>€850.00</b>	<b>Red</b>	<b>Harwich</b>	<b>UKMI PLC</b>	<b>€935.00</b>
Micro	376C15423009	1	600	€850.00	Red	Harwich	UKMI PLC	€935.00
Micro	376B15423020	1	600	€850.00	Red	Harwich	UKMI PLC	€935.00
Micro	377B15423003	1	600	€850.00		Harwich	UKMI PLC	€935.00
Micro	377C15423006	1	600	€850.00		Harwich	UKMI PLC	€935.00
MicroB	376C15423001	1	500	€750.00	Green	Harwich	UKMI PLC	€825.00
MicroB	377A15423015	1	500	€750.00	White	Harwich	UKMI PLC	€825.00
MicroEco	377B15423006	4		€1,300.00	Green	Harwich	UKMI PLC	€1,430.00
MicroEco	377A15423009	4		€1,300.00	Red	Harwich	UKMI PLC	€1,430.00
MicroEco	376B15423011	4		€1,300.00	Blue	Harwich	UKMI PLC	€1,430.00
MicroSE	377A15423004	3	900	€1,200.00	Green	Harwich	UKMI PLC	€1,320.00
MicroSE	376B15423017	3	900	€1,200.00	Blue	Harwich	UKMI PLC	€1,320.00
<b>MicroSE</b>	<b>377C15423020</b>	<b>3</b>	<b>900</b>	<b>€1,200.00</b>	<b>Gold</b>	<b>Harwich</b>	<b>UKMI PLC</b>	<b>€1,320.00</b>
MicroSE	377A15423003	3	900	€1,200.00	Green	Harwich	UKMI PLC	€1,320.00
MicroSE	377B15423008	3	900	€1,200.00	Silver	Harwich	UKMI PLC	€1,320.00
MicroSE	377B15423014	3	900	€1,200.00	Red	Harwich	UKMI PLC	€1,320.00
MicroSE	377A15423001	3	900	€1,200.00	Gold	Harwich	UKMI PLC	€1,320.00
<b>MicroZed</b>	<b>377C15423019</b>	<b>2</b>	<b>1200</b>	<b>€1,100.00</b>	<b>Gold</b>	<b>Harwich</b>	<b>UKMI PLC</b>	<b>€1,210.00</b>
MicroZed	377A15423011	2	1200	€1,100.00	White	Harwich	UKMI PLC	€1,210.00
MicroZed	377B15423007	2	1200	€1,100.00	Blue	Harwich	UKMI PLC	€1,210.00
MicroZed	376B15423005	2	1200	€1,100.00	Green	Harwich	UKMI PLC	€1,210.00
MicroZed	377B15423007	2	1200	€1,100.00	Green	Harwich	UKMI PLC	€1,210.00
MicroZed	376B15423005	2	1200	€1,100.00	White	Harwich	UKMI PLC	€1,210.00

Report title 1 mark

Page orientation landscape 1 mark  
 1 page wide 1 mark  
 Only these 9 fields (any order) 1 mark  
 Labels and data fully visible 1 mark

3 Added records 3 marks

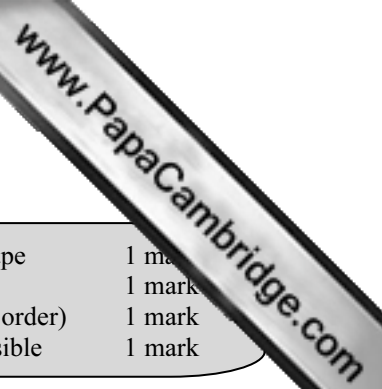
Calculated field 2 marks  
 format with Euro sign and 2 dp 1 mark

Selected records 2 marks  
 UK (Harwich) and not Dispatched (26 records only)

Records sorted on model ascending 1 mark

Candidate details bottom left 1 mark

Name, Centre number, Candidate Number



## Voltage must be checked before delivery

VIN	Model	Colour	Port	Fuel	Dispatched
366C15423008	MicroEco	Gold	Brest	FMD SA	No
366C15423009	MicroEco	Gold	Brest	FMD SA	No
366C15423013	MicroEco	Blue	Brest	FMD SA	No
366C15423018	MicroEco	Blue	Brest	FMD SA	No
365C15423010	MicroEco	White	Rotterdam	NMD	No
365C15423011	MicroEco	Green	Rotterdam	NMD	No
365C15423017	MicroEco	White	Rotterdam	NMD	No
366C15423001	MicroEco	Silver	Rotterdam	NMD	No
366C15423004	MicroEco	White	Rotterdam	NMD	No
366C15423017	MicroEco	Blue	Rotterdam	NMD	No
366C15423019	MicroEco	Gold	Rotterdam	NMD	No
366C15423006	MicroEco	White	Vigo	EMD SA	No

Report title 1 mark  
 Field selection and in specified order 1 mark  
 And all fully visible

Number of cars to check 12

Record selection on VIN 2 marks  
 2 criteria 365C\* or 366C\* selection on Fuel = 4 1 mark  
 Dispatched=No 1 mark  
 Field sort order Port then VIN ascending 2 marks

Count of records =12 2 marks  
 Label **Number of cars to check** 1 mark  
 Own details at bottom of report 1 mark

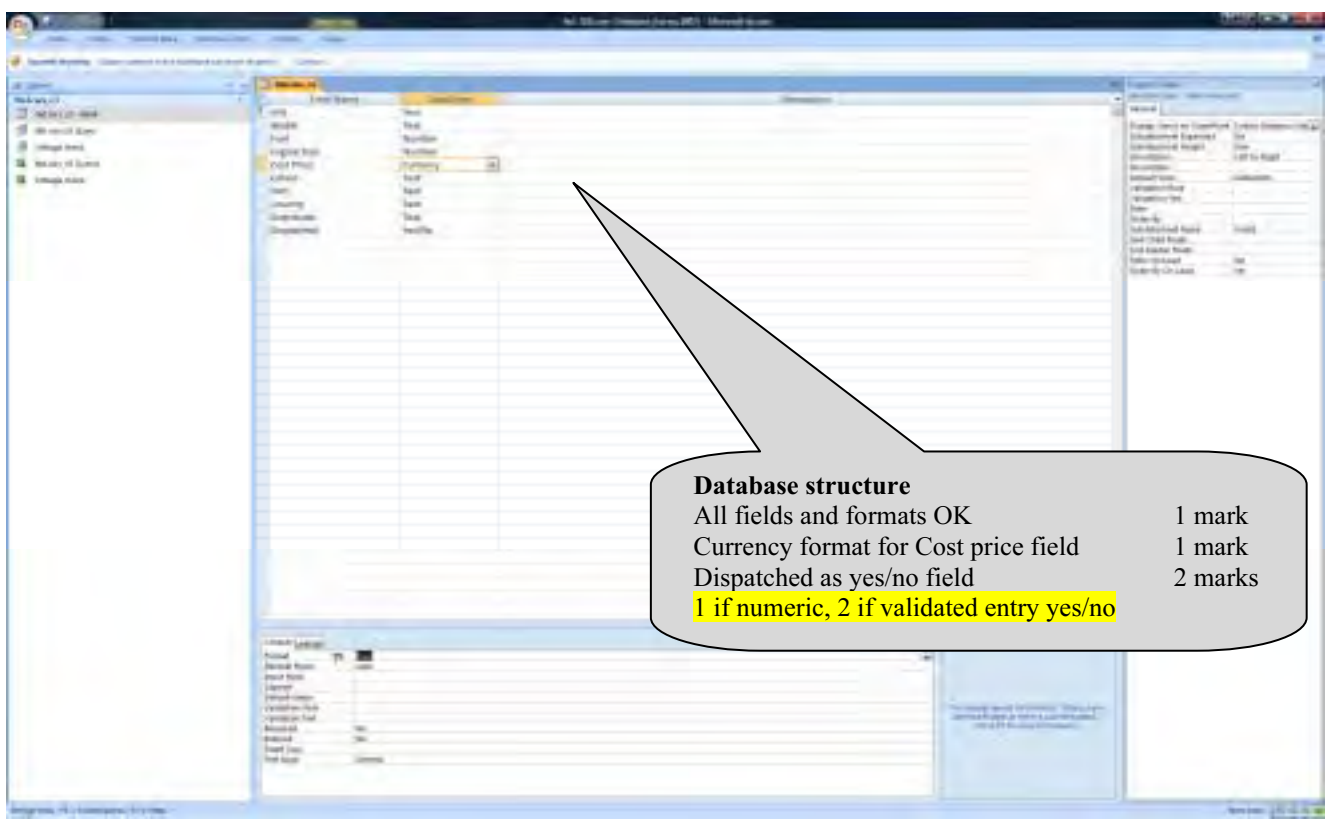
Page 7	Mark Scheme: Teachers' version	Syllabus
	IGCSE – May/June 2011	0417

Centre number Candidate name Candidate number

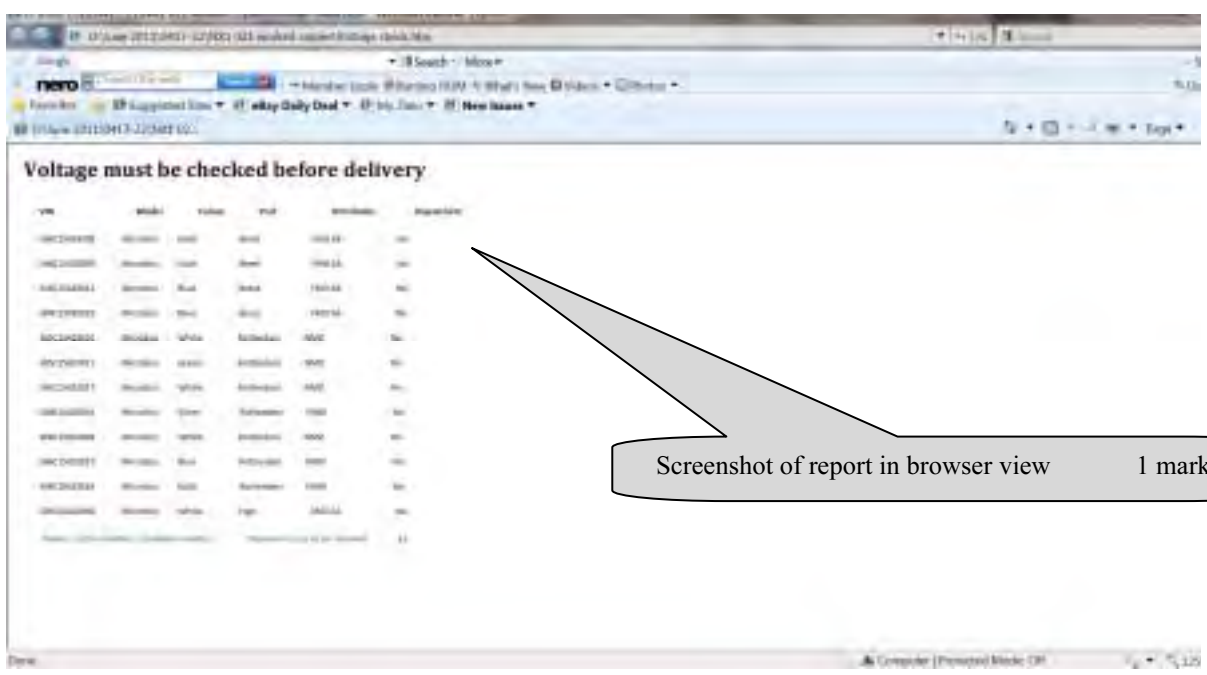
Evidence document  
Step 2 Contact entry

Add contact with job title  
[rizwan@cie.org.uk](mailto:rizwan@cie.org.uk)  
Development Manager 2 marks

Step 39 Database field structure screenshot here:



**Database structure**  
All fields and formats OK 1 mark  
Currency format for Cost price field 1 mark  
Dispatched as yes/no field 2 marks  
1 if numeric, 2 if validated entry yes/no



Screenshot of report in browser view 1 mark

Page 8	Mark Scheme: Teachers' version	Syllabus
	IGCSE – May/June 2011	0417

Centre number Candidate name

Step 50 e-mail contact details

**Correct addresses**  
To: [Design.h@cie.org.uk](mailto:Design.h@cie.org.uk) 1 mark  
Cc: Development Manager  
[rizwan@cie.org.uk](mailto:rizwan@cie.org.uk) 1 mark

**Correct subject**  
Port facilities report 1 mark

**Content**  
Personal details and  
The draft report for your approval is attached. 1 mark

Document attached 1 mark

Step 51 Screenshot of files remaining in your work area.  
Should not include

J11Evidence.rtf,  
J11Port22.rtf,  
J11Cars22.csv

Files deleted 1 mark

Working files in view showing file types eg

- J11Evidence9999,
- a db file,
- the text doc with new name,
- web page file

Working files in view  
with file type showing 1 mark